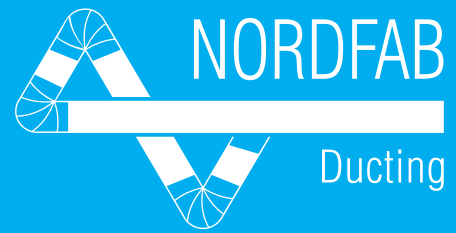


# Why Use Nordfab Ducting In Your Woodworking Facility?



## A Proven Application

Nordfab ducting has been used for dust collection in woodshops around the world for more than 40 years. Because Nordfab's Quick-Fit™ duct is well-constructed, modular, and easy to put together or take apart, and because it is re-useable, it has become a standard for ducting in the industry. Nordfab's ISO 9001 certification helps guarantee you always get high product quality.

Nordfab is the perfect match for any growing wood shop or manufacturing facility because:

- Quick-Fit (QF) ducting can be installed by almost anyone – components are assembled with a simple clamp and Gripple hangers are easy to install to keep duct securely in place.
- QF duct can easily be disassembled (unclamped) for relocation when woodworking machines are moved / or changed or new machines installed in the shop.
- QF is a modular system available in diameters from 3" - 24" (for high wear applications, heavy gauge ducting available in 8" - 24" diameters).
- QF duct can easily be moved from one building to another.
- Leakage is virtually non-existent, resulting in a highly efficient system where the suction is provided to the machines, not leakage in the ductwork.
- All the components you need are available from one source (see page 2).

Our local rep can help you with layouts and exact product selection.

Contact Nordfab's local ducting expert:

Rolen & Associates  
26100 Broadway Ave., Unit C, Oakwood Village, OH 44146  
440.439.3322 • [www.rolenusa.com](http://www.rolenusa.com)

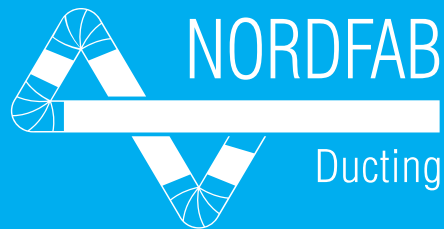


Above: Woodworking facility before installation of Nordfab ducting.

Right: After installation of Nordfab ducting.

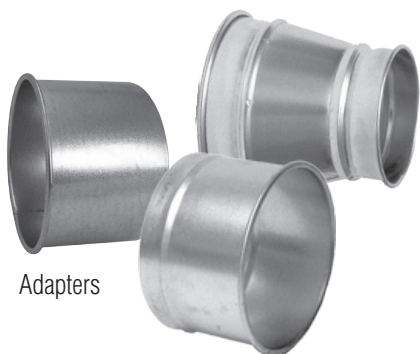


# Why Use Nordfab Ducting In Your Woodworking Shop?



## One Source

Nordfab can provide all the duct components you need for your shop's dust collection system, built in the wall thickness your application requires (14 or 12 gauge available for highly abrasive material or high wear areas).



Adapters

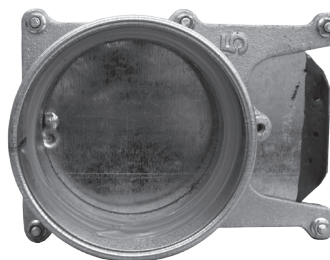


Floor Sweeps

Ball Joints



Hose



Gates

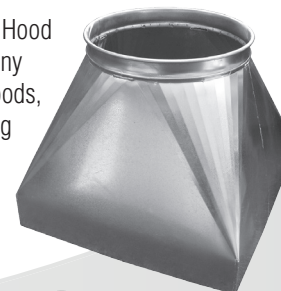


Branches



Elbows

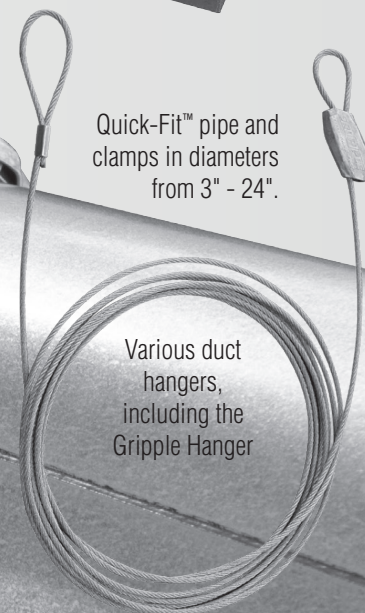
Canopy Hood (and many other hoods, including custom)



Custom Manifolds

Quick-Fit™ pipe and clamps in diameters from 3" - 24".

Various duct hangers, including the Gripple Hanger



Contact Nordfab's local ducting expert:

Rolen & Associates  
26100 Broadway Ave., Unit C, Oakwood Village, OH 44146  
440.439.3322 • [www.rolenusa.com](http://www.rolenusa.com)

The world's fastest ducting™